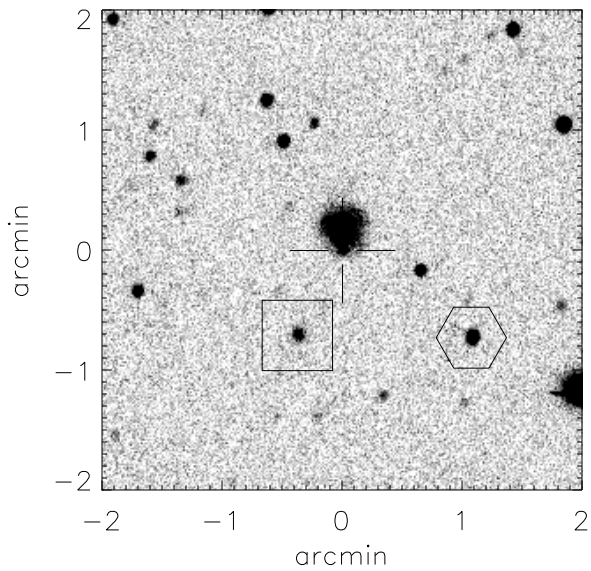


# Finding chart for S2004-053

aka cand0697



CANDIDATE (cross):

RA (2000): 13 h 43 m 13.03 s

Dec(2000): +03 d 49' 53.2"

HEX Star: Mag: 16.42

RA (2000): 13 h 43 m 8.70 s

Dec(2000): +03 d 49' 10.1"

Offset (2000) to cand:

73.74" west, 49.07" north

BOX Star: Mag: 17.96

RA (2000): 13 h 43 m 14.50 s

Dec(2000): +03 d 49' 11.2"

Offset (2000) to cand:

25.21" east, 47.81" north

Offset (E,N,2000) to hex: -86.89", -1.08"

## Overview Finder Chart

