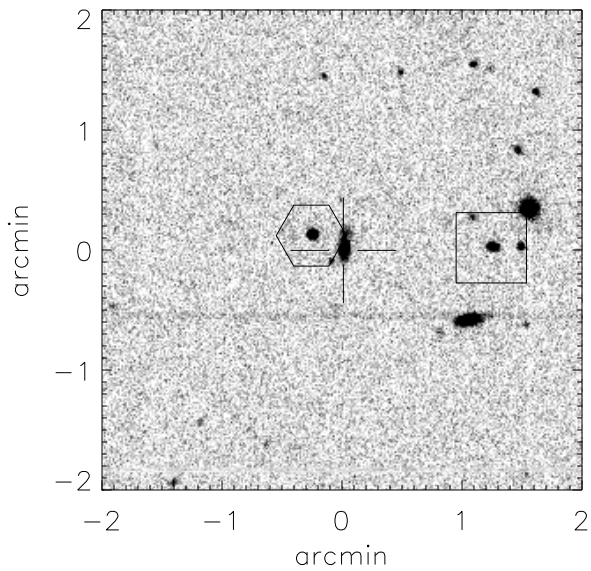


# Finding chart for S2004-056

aka cand0700



CANDIDATE (cross):

RA (2000): 12 h 25 m 57.69 s

Dec(2000): +04 d 51' 37.1"

HEX Star: Mag: 16.93

RA (2000): 12 h 25 m 58.73 s

Dec(2000): +04 d 51' 44.9"

Offset (2000) to cand:

17.70" east, 8.88" south

BOX Star: Mag: 18.26

RA (2000): 12 h 25 m 52.72 s

Dec(2000): +04 d 51' 38.8"

Offset (2000) to cand:

84.65" west, 1.96" south

Offset (E,N,2000) to hex: 89.85", 6.06"

## Overview Finder Chart

