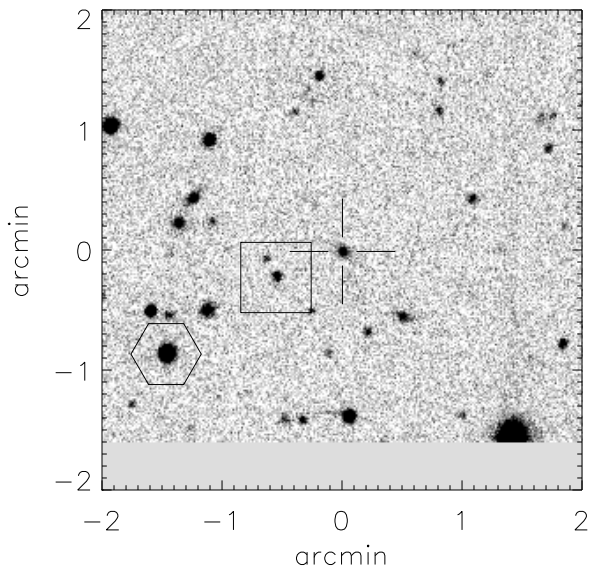


Finding chart for S2004-061

aka cand0705



CANDIDATE (cross):

RA (2000): 15 h 13 m 48.02 s

Dec(2000): +05 d 37' 36.1"

HEX Star: Mag: 14.75

RA (2000): 15 h 13 m 53.88 s

Dec(2000): +05 d 36' 45.3"

Offset (2000) to cand:

99.79" east, 57.90" north

BOX Star: Mag: 18.68

RA (2000): 15 h 13 m 50.21 s

Dec(2000): +05 d 37' 23.5"

Offset (2000) to cand:

37.31" east, 14.34" north

Offset (E,N,2000) to hex: 54.83", -38.24"

Overview Finder Chart

