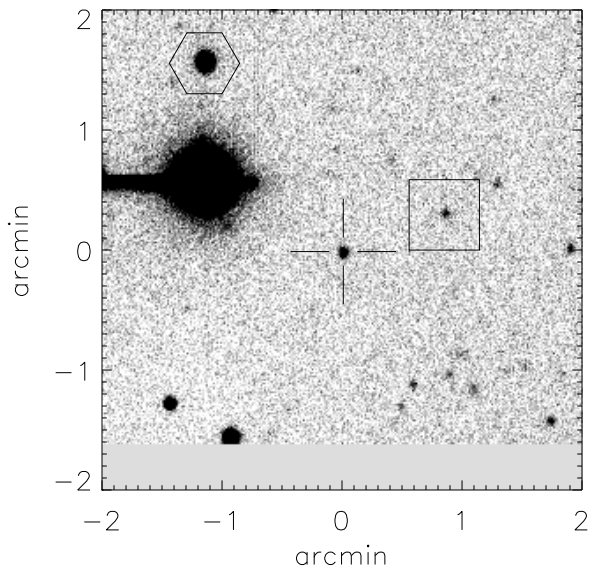


Finding chart for S2004-066

aka cand0710



CANDIDATE (cross):

RA (2000): 15 h 04 m 48.64 s

Dec(2000): +05 d 37' 39.4"

HEX Star: Mag: 14.38

RA (2000): 15 h 04 m 53.25 s

Dec(2000): +05 d 39' 13.8"

Offset (2000) to cand:

78.44" east, 107.57" south

BOX Star: Mag: 19.30

RA (2000): 15 h 04 m 45.23 s

Dec(2000): +05 d 37' 58.2"

Offset (2000) to cand:

57.94" west, 21.37" south

Offset (E,N,2000) to hex: 119.80", 75.63"

Overview Finder Chart

