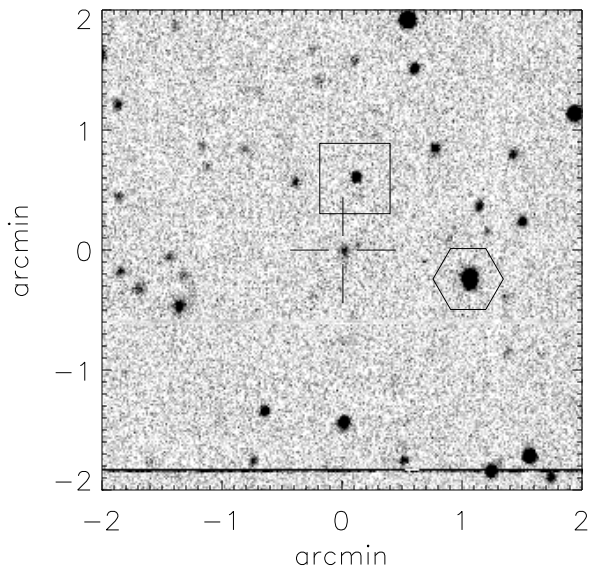


# Finding chart for S2004-055

aka cand0699



CANDIDATE (cross):

RA (2000): 15 h 31 m 14.68 s

Dec(2000): +04 d 48' 54.6"

HEX Star: Mag: 15.43

RA (2000): 15 h 31 m 10.46 s

Dec(2000): +04 d 48' 40.6"

Offset (2000) to cand:

71.74" west, 15.95" north

BOX Star: Mag: 18.23

RA (2000): 15 h 31 m 14.25 s

Dec(2000): +04 d 49' 30.7"

Offset (2000) to cand:

7.31" west, 41.21" south

Offset (E,N,2000) to hex: -56.61", -50.17"

## Overview Finder Chart

