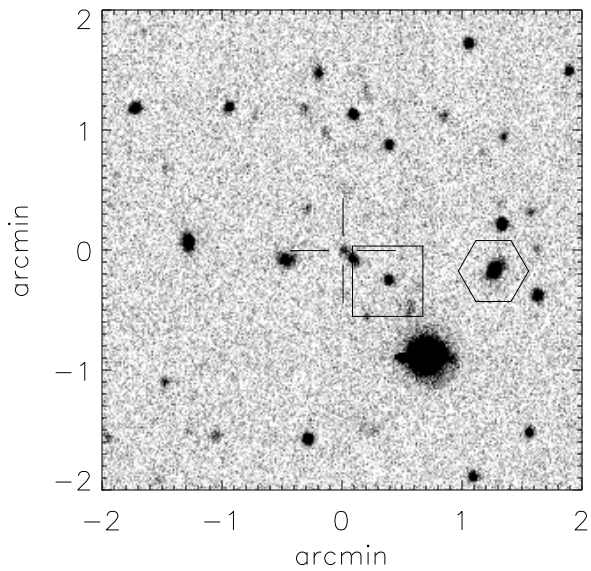


Finding chart for S2004-057

aka cand0701



CANDIDATE (cross):

RA (2000): 15 h 18 m 29.61 s

Dec(2000): +06 d 12' 59.7"

HEX Star: Mag: 17.15

RA (2000): 15 h 18 m 24.54 s

Dec(2000): +06 d 12' 49.9"

Offset (2000) to cand:

86.04" west, 11.11" north

BOX Star: Mag: 18.32

RA (2000): 15 h 18 m 28.08 s

Dec(2000): +06 d 12' 44.8"

Offset (2000) to cand:

25.89" west, 16.91" north

Offset (E,N,2000) to hex: -52.80", 5.10"

Overview Finder Chart

