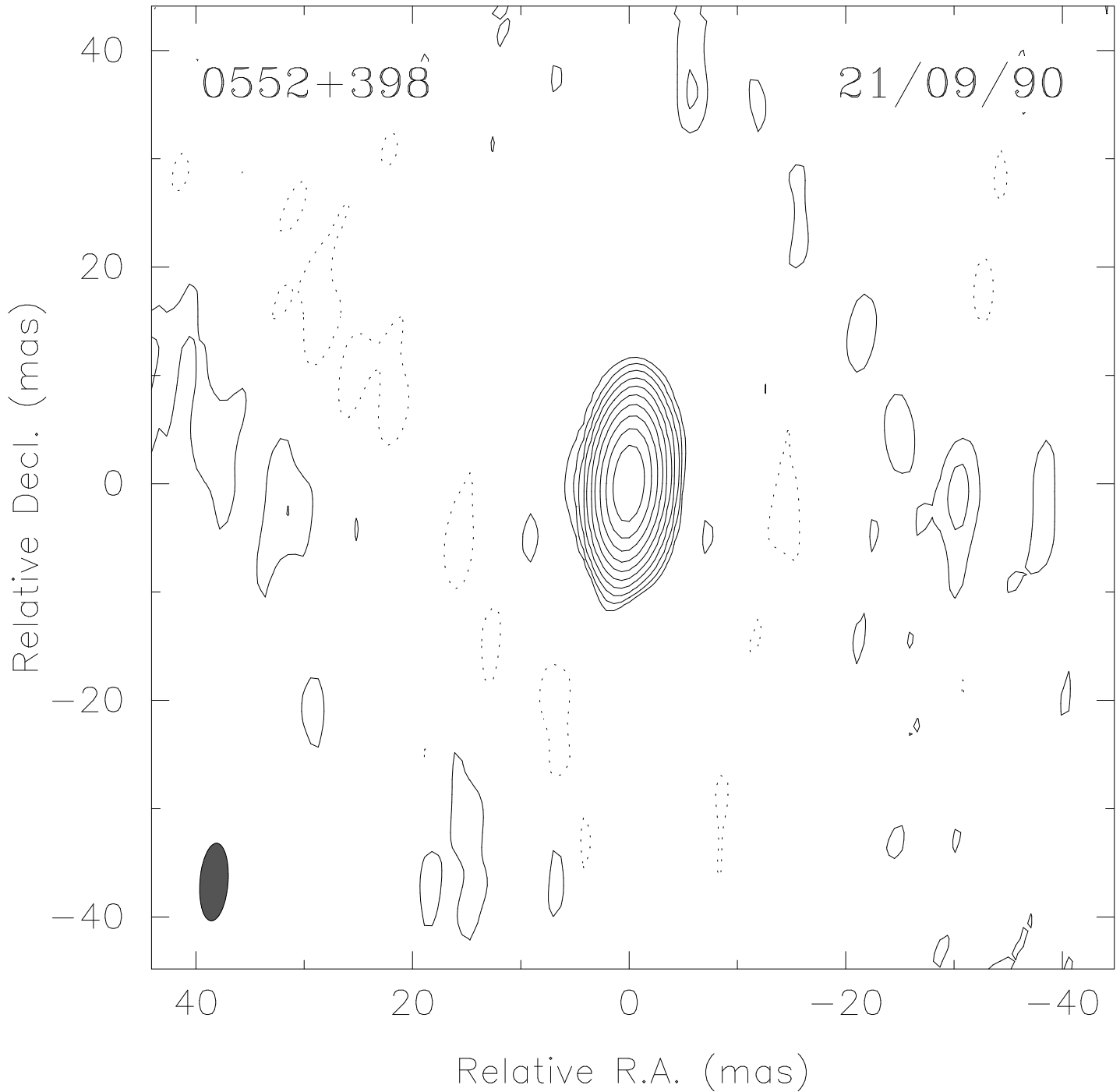


Frequency: 1.664 GHz, sigma=1.003110



Maximum: 1.738 JY/BEAM

Contours (%): -0.10 0.10 0.20 0.40 0.80 1.60 3.20 6.40 12.80 25.60

Contours (%): 51.20

Beam: FWHM 7.18 × 2.59 mas, p.a. -4.4°

File: 0552+398.cmp_n (29-Sep-1994 19:43)