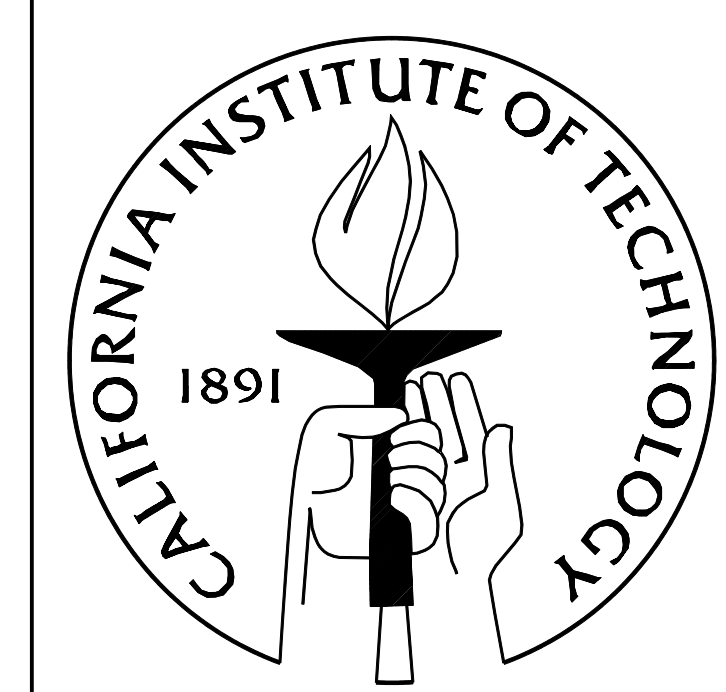


- ay GENERAL
- ra OVRO/CARMA/RADIO
- oc OBS CO
- sm SUB-MM/IR
- co COO
- sa SPACE ASTROPHYSICS
- sr SRL
- dm DARK MATTER

GENERAL NOTES :

1. ALSO SEE LS SERIES DRAWINGS FOR FIRE RESISTANCE AND LIFE SAFETY INFORMATION
2. INSTALL 3 ROWS OF 4" WIDE BACKER PLATES TYP. AT ALL INTERIOR ROOM WALLS THIS FLOOR.
3. INSTALL 1 ROW OF 4" WIDE BACKER PLATE AT SS WALL PROTECTION LOCATIONS.
4. PAINT ALL EXPOSED CONCRETE IN LAB INTERIORS, SEE LAB ELEVATIONS.

Building Permit 09-11-2006



CAHILL CENTER FOR ASTRONOMY AND ASTROPHYSICS

1216 EAST CALIFORNIA BLVD.
PASADENA, CALIFORNIA 91125

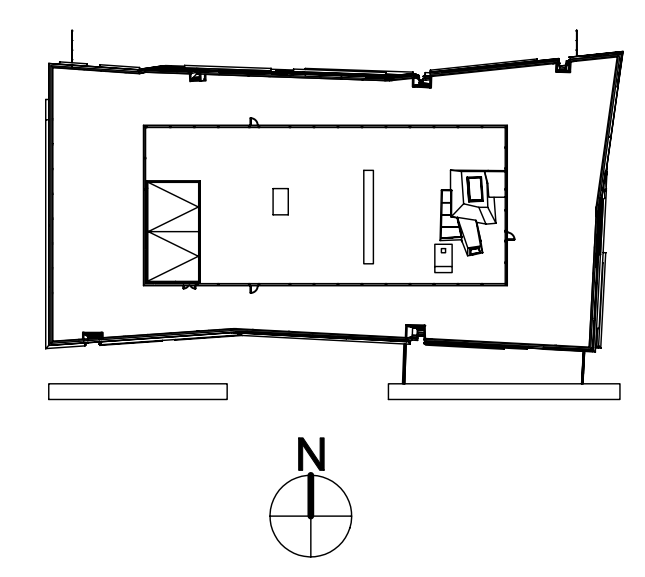
ARCHITECT:
mOrphosis®
2041 Colorado Avenue
Santa Monica, CA 90404
voice: 310 - 453 - 2247
fax: 310 - 829 - 3270

SEAL:

ISSUES / REVISIONS:

DATE	SYMBOL	DESCRIPTION
09-01-2005		50% SD
10-20-2005		90% SD
11-23-2005		100% SD
03-06-2006		50% DD
05-22-2006		100% DD
09-11-2006		Building Permit

KEY PLAN:



CALTECH PROJECT NUMBER: CP 400
PROJECT NUMBER: 24800.00
PHASE: CONSTRUCTION DOCUMENTS
DATE: 09-11-2006
SCALE: 1/8" = 1'-0" @ 30"x42" SHEET

**FLOOR FINISH PLAN
BASEMENT
EL.-15'**

A-671.0