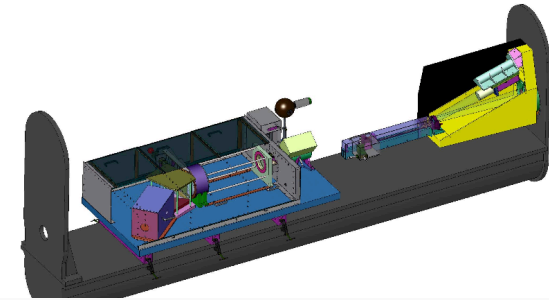


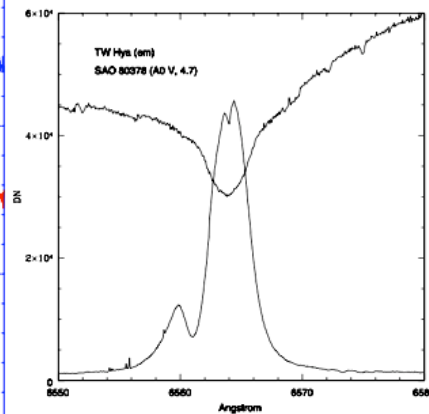
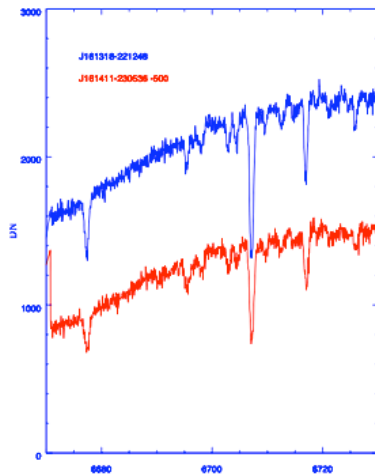
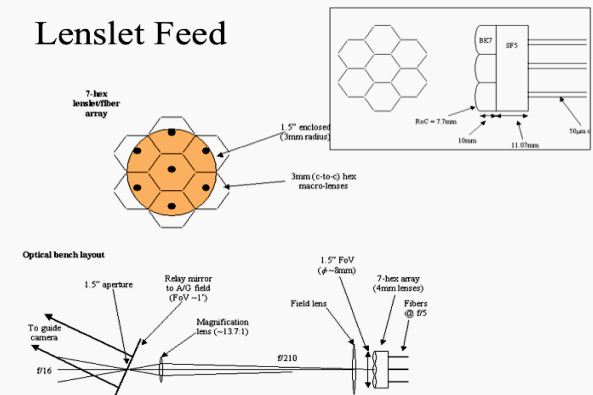
# Palomar East Arm Echelle

Keith Taylor, Khanh Bui, Bob Weber, Hal Petrie, Ernest Croner,  
Judy Cohen, Greg Herczeg, Andrew Pickles

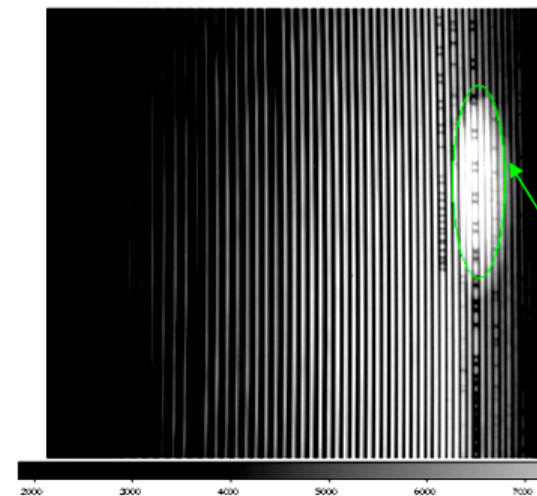


- R~30,000 X-dispersed spectroscopy on P200 using Libbrecht echelle
- 7 fibers coupled to lenslet array: 1.5" aperture into 0.5" slit
- foreoptics and lenslet alignment critical; still being improved
- Covers full spectrum 390-880nm at about 3% TOTAL efficiency
- S/N~30 for m=11 in ~600 sec, m=13 in ~1 hr, m=15 in 6-7 hr (est)
- can be accessed in ~20 minutes regardless of other instrumentation.
- auto-fill system under development for constant availability

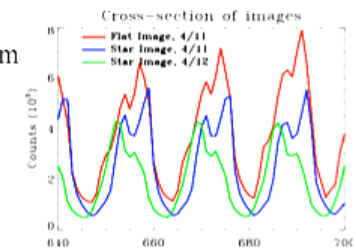
## Lenslet Feed



390nm



880nm



• 5% ghost