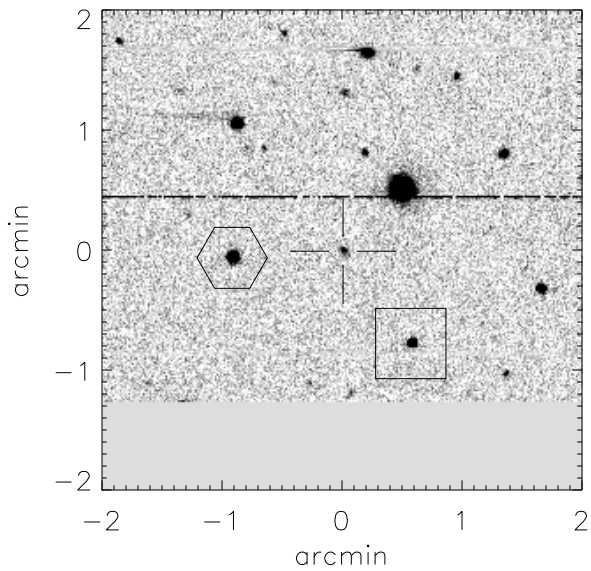


# Finding chart for S2004-065

aka cand0709



CANDIDATE (cross):

RA (2000): 12 h 40 m 58.89 s

Dec(2000): +04 d 48' 5.9"

HEX Star: Mag: 16.45

RA (2000): 12 h 41 m 2.56 s

Dec(2000): +04 d 48' 3.0"

Offset (2000) to cand:

62.57" east, 3.29" north

BOX Star: Mag: 17.79

RA (2000): 12 h 40 m 56.58 s

Dec(2000): +04 d 47' 20.3"

Offset (2000) to cand:

39.02" west, 51.98" north

Offset (E,N,2000) to hex: 89.51", 42.71"

## Overview Finder Chart

