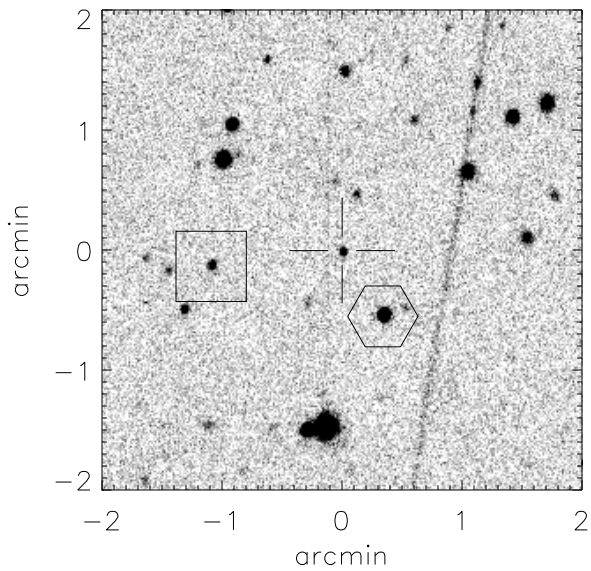


Finding chart for S2004-069

aka cand0713



CANDIDATE (cross):

RA (2000): 14 h 38 m 13.28 s

Dec(2000): +19 d 08' 41.5"

HEX Star: Mag: 16.34

RA (2000): 14 h 38 m 11.82 s

Dec(2000): +19 d 08' 9.1"

Offset (2000) to cand:

23.62" west, 36.91" north

BOX Star: Mag: 18.83

RA (2000): 14 h 38 m 17.87 s

Dec(2000): +19 d 08' 34.1"

Offset (2000) to cand:

74.01" east, 8.47" north

Offset (E,N,2000) to hex: -85.73", -24.94"

Overview Finder Chart

