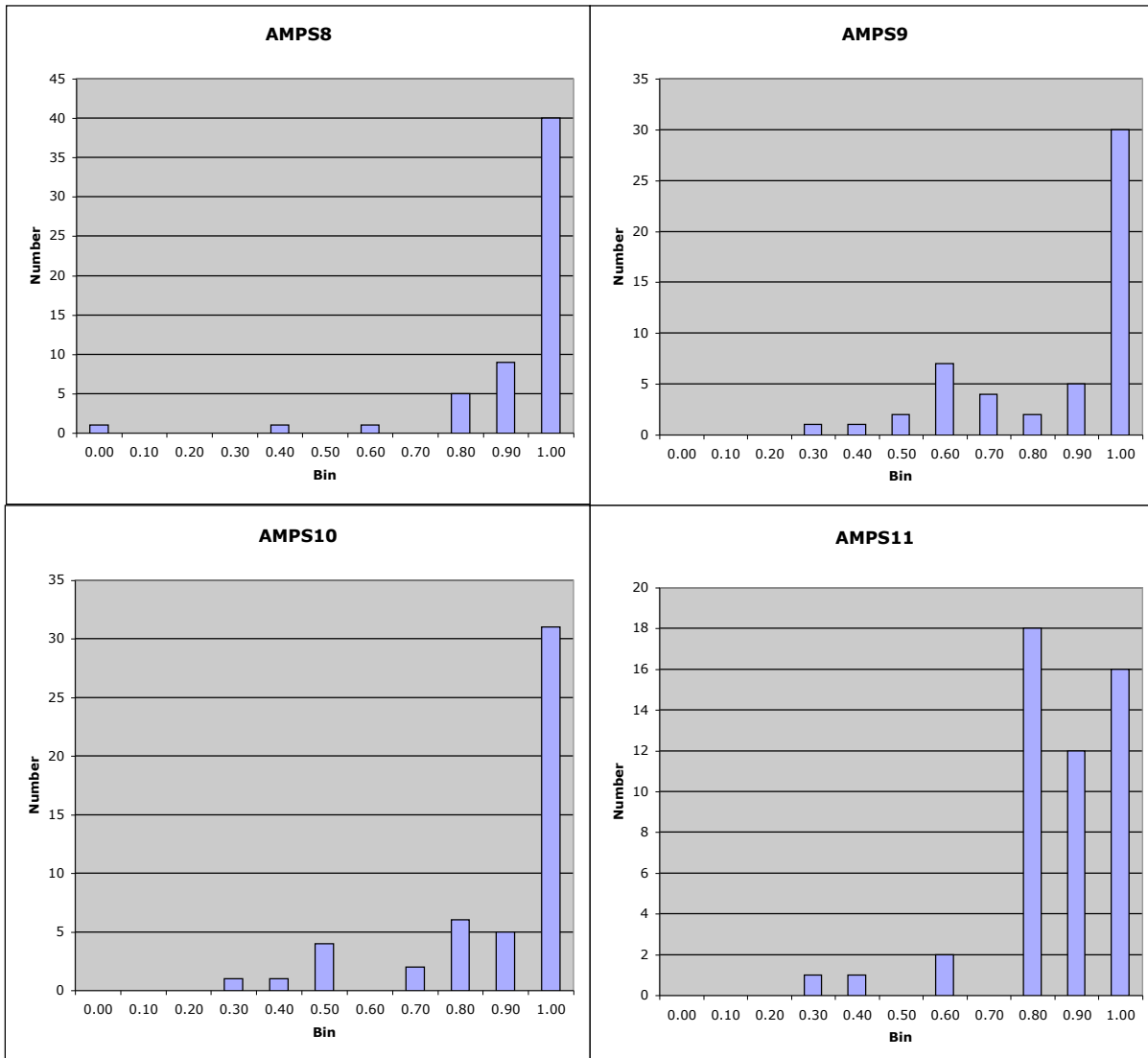
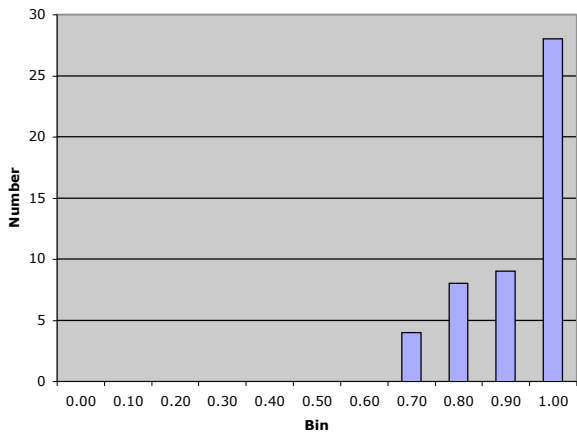


bin	AMPS8	AMPS9	AMPS10	AMPS11	EMPS1	EMPS2	EMPS3	EMPS4
-0.10	0	5	7	7	8	8	7	11
0.00	1	0	0	0	0	0	0	0
0.10	0	0	0	0	0	0	0	0
0.20	0	0	0	0	0	0	0	0
0.30	0	1	1	1	0	0	0	1
0.40	1	1	1	1	0	0	1	1
0.50	0	2	4	0	0	6	0	0
0.60	1	7	0	2	0	1	1	0
0.70	0	4	2	0	4	4	1	2
0.80	5	2	6	18	8	7	3	1
0.90	9	5	5	12	9	7	8	5
1.00	40	30	31	16	28	24	35	36
total turned in	57	52	50	50	49	49	49	46
median score	50	46	38	41.25	38	36	38	39
median fractional score	1.00	0.92	0.95	1.03	0.76	0.72	0.76	0.78
mean score	46	41	34	41	36	33	38	37
mean fractional score	0.92	0.83	0.85	0.82	0.90	0.83	0.94	0.91
sum of squares	50.10	37.48	37.73	34.62	40.41	35.58	43.10	39.49
stdev	0.17	0.19	0.19	0.14	0.11	0.18	#NUM!	0.15

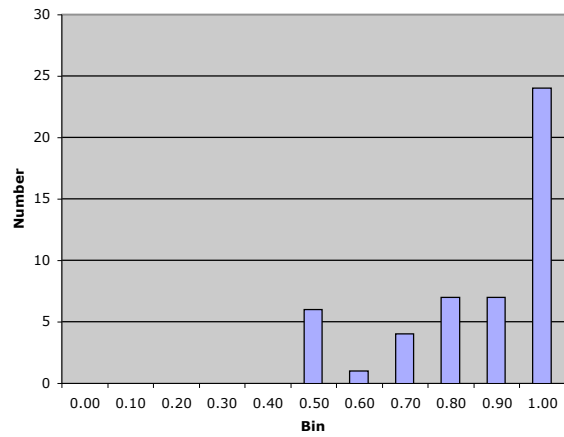
Histogram bin labels indicate the upper end of the bin; e.g. 0.80 -> scores between 0.70 and 0.80



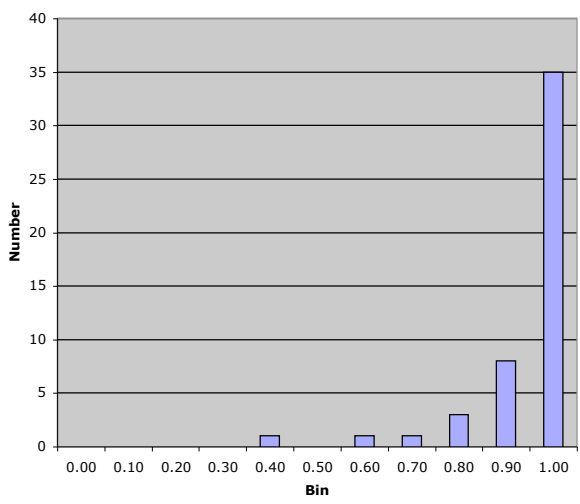
EMPS1



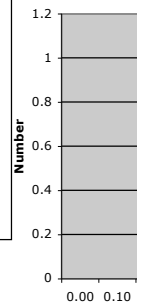
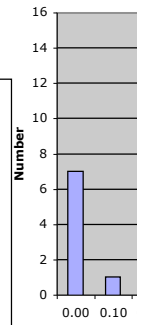
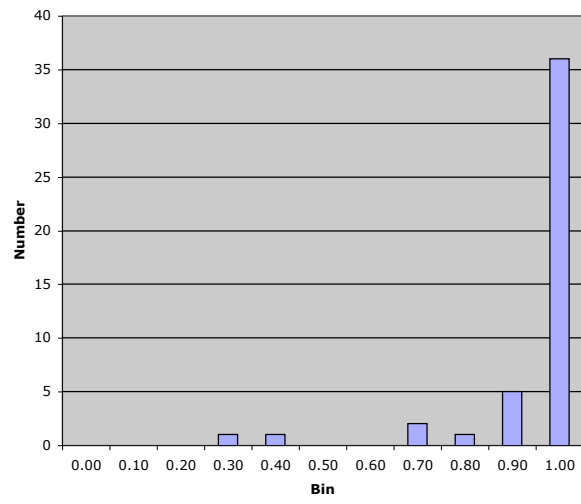
EMPS2



EMPS3

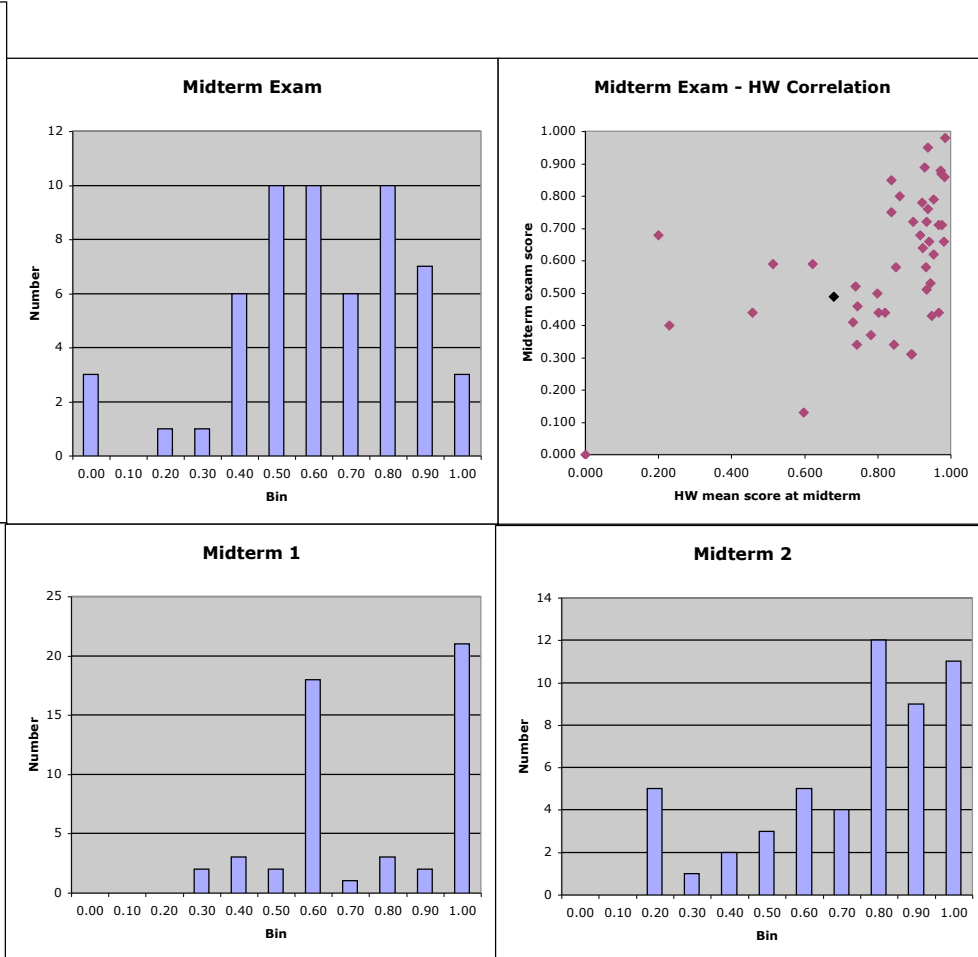


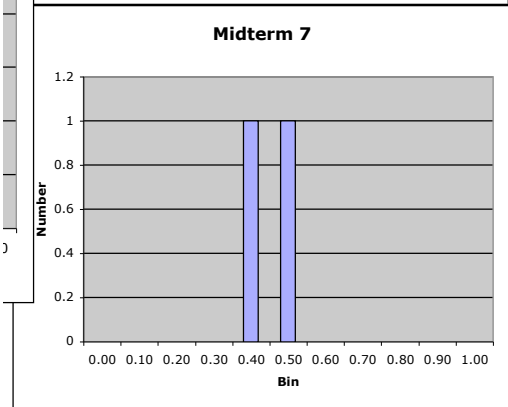
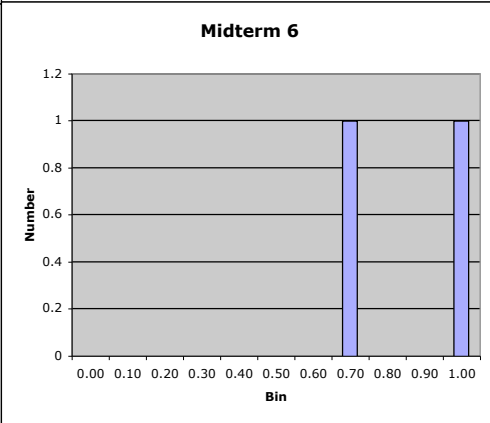
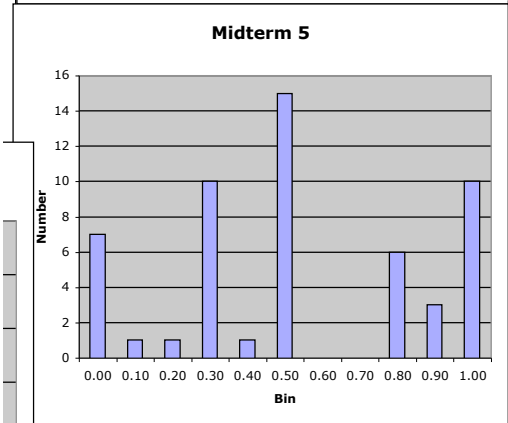
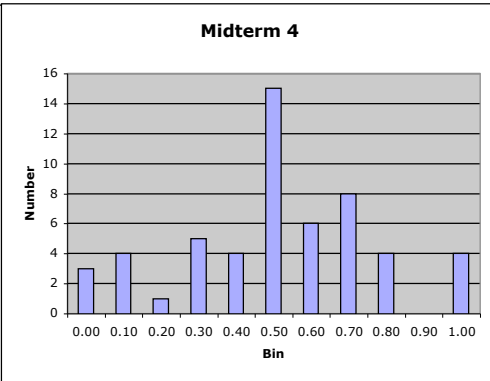
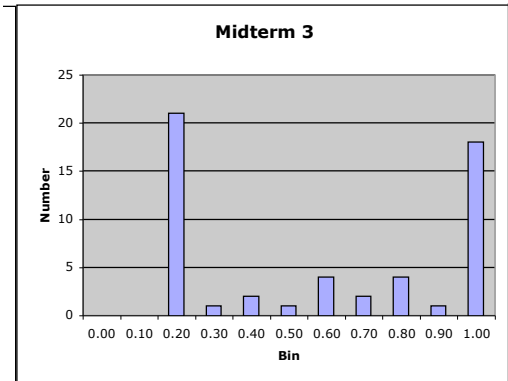
EMPS4



bin	Midterm 1	Midterm 2	Midterm 3	Midterm 4	Midterm 5	Midterm 6	Midterm 7	Midterm Exam
-0.10	5	5	3	3	3	55	55	0
0.00	0	0	0	3	7	0	0	3
0.10	0	0	0	4	1	0	0	0
0.20	0	5	21	1	1	0	0	1
0.30	2	1	1	5	10	0	0	1
0.40	3	2	2	4	1	0	1	6
0.50	2	3	1	15	15	0	1	10
0.60	18	5	4	6	0	0	0	10
0.70	1	4	2	8	0	1	0	6
0.80	3	12	4	4	6	0	0	10
0.90	2	9	1	0	3	0	0	7
1.00	21	11	18	4	10	1	0	3
total turned in	52	52	54	54	54	2	2	57
median score	15	15	12	10	10	17	9	59
median fractional score	0.60	0.60	0.48	0.40	0.40	0.66	0.36	0.59
mean score	15	14	12	10	10	17	9	58
mean fractional score	0.61	0.57	0.46	0.40	0.41	0.66	0.36	0.58
sum of squares	32.53	29.67	24.82	16.88	20.35	1.42	0.41	22.21
stdev	0.51	0.50	0.49	0.39	0.45	0.53	0.27	0.24

Histogram bin labels indicate the upper end of the bin; e.g. 0.80 -> scores between 0.70 and 0.80





bin	Final 1	Final 2	Final 3	Final 4	Final 5	Final 6	Final 7	Final Exam
-0.10	4	4	4	4	53	53	53	0
0.00	1	2	0	0	0	0	0	4
0.10	0	0	0	2	0	0	0	0
0.20	2	5	3	4	0	0	0	1
0.30	3	3	2	4	0	0	0	4
0.40	2	0	3	4	0	0	0	1
0.50	3	4	1	2	0	0	0	4
0.60	4	8	3	2	0	0	0	5
0.70	7	6	6	4	0	0	0	6
0.80	4	3	6	2	0	0	0	3
0.90	5	5	6	0	0	0	0	12
1.00	18	13	19	25	0	0	0	13
total turned in	49	49	49	49	0	0	0	53
median score	8	7	9	10	#NUM!	#NUM!	#NUM!	31
median fractional score	0.80	0.70	0.85	1.00	#NUM!	#NUM!	#NUM!	0.78
mean score	7	7	8	7	#DIV/0!	#DIV/0!	#DIV/0!	27
mean fractional score	0.73	0.67	0.77	0.72	#DIV/0!	#DIV/0!	#DIV/0!	0.67
sum of squares	30.07	26.02	32.15	30.64	0.00	0.00	0.00	28.41
stdev	0.27	0.29	0.25	0.32	#DIV/0!	#DIV/0!	#DIV/0!	0.30

Histogram bin labels indicate the upper end of the bin; e.g. 0.80 -> scores between 0.70 and 0.80

